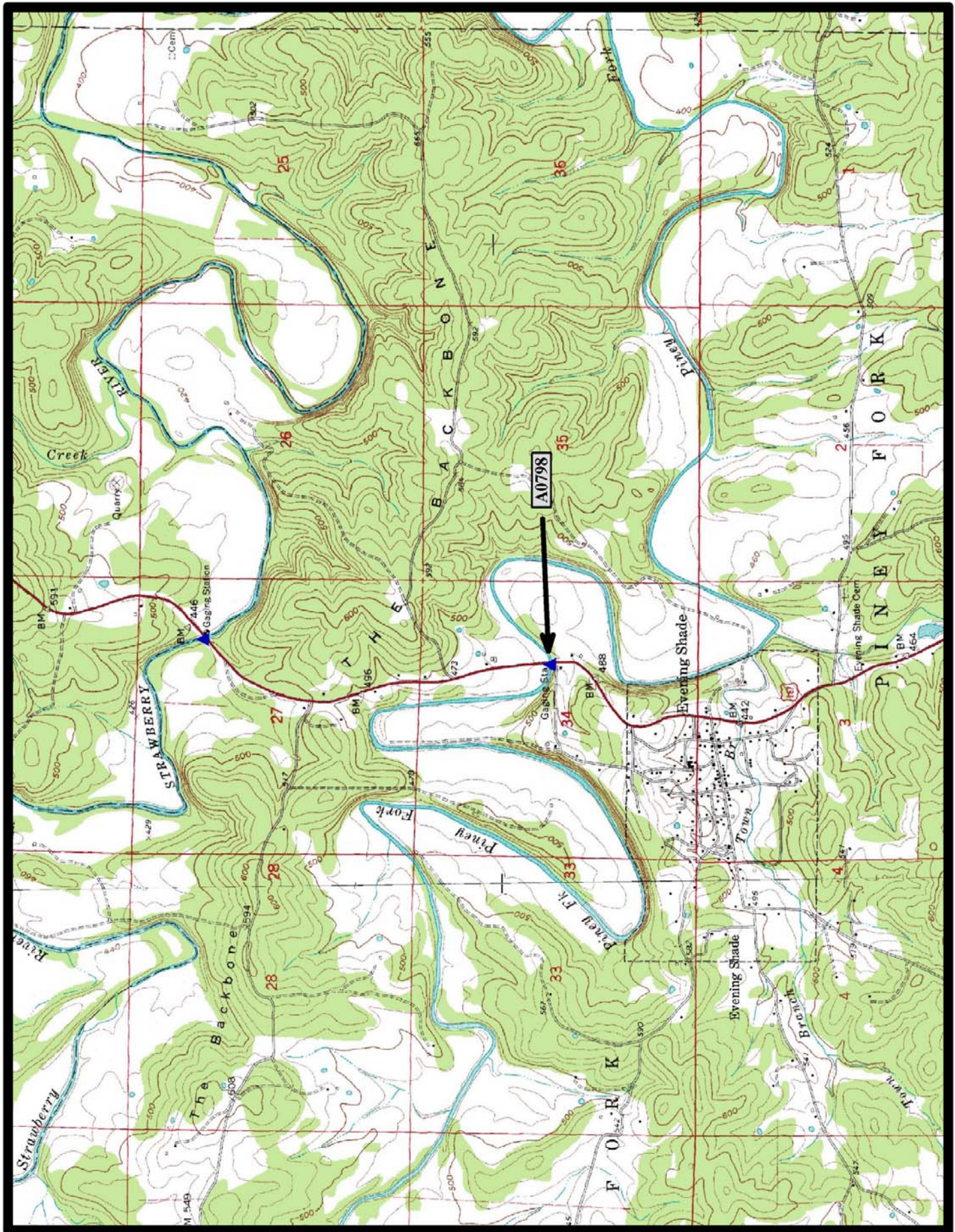




HISTORIC BRIDGE #A0798
US HIGHWAY 167
SHARP COUNTY
CONCRETE ARCH, DECK - OPEN SPANDREL
CROSSES - PINEY FORK
DATE OF CONSTRUCTION – 1928
DATE OF ALTERATION - 1956
BUILDER - FRED LUTTJOHANN, TOPEKA, KS
HISTORIC BRIDGE INVENTORY DATE - 2005
SHPO NUMBER – SH0199
HAER NUMBER -
DATE LISTED ON NATIONAL REGISTER -
LAT./LONG. 36:04:50.31, -91:36:38.76

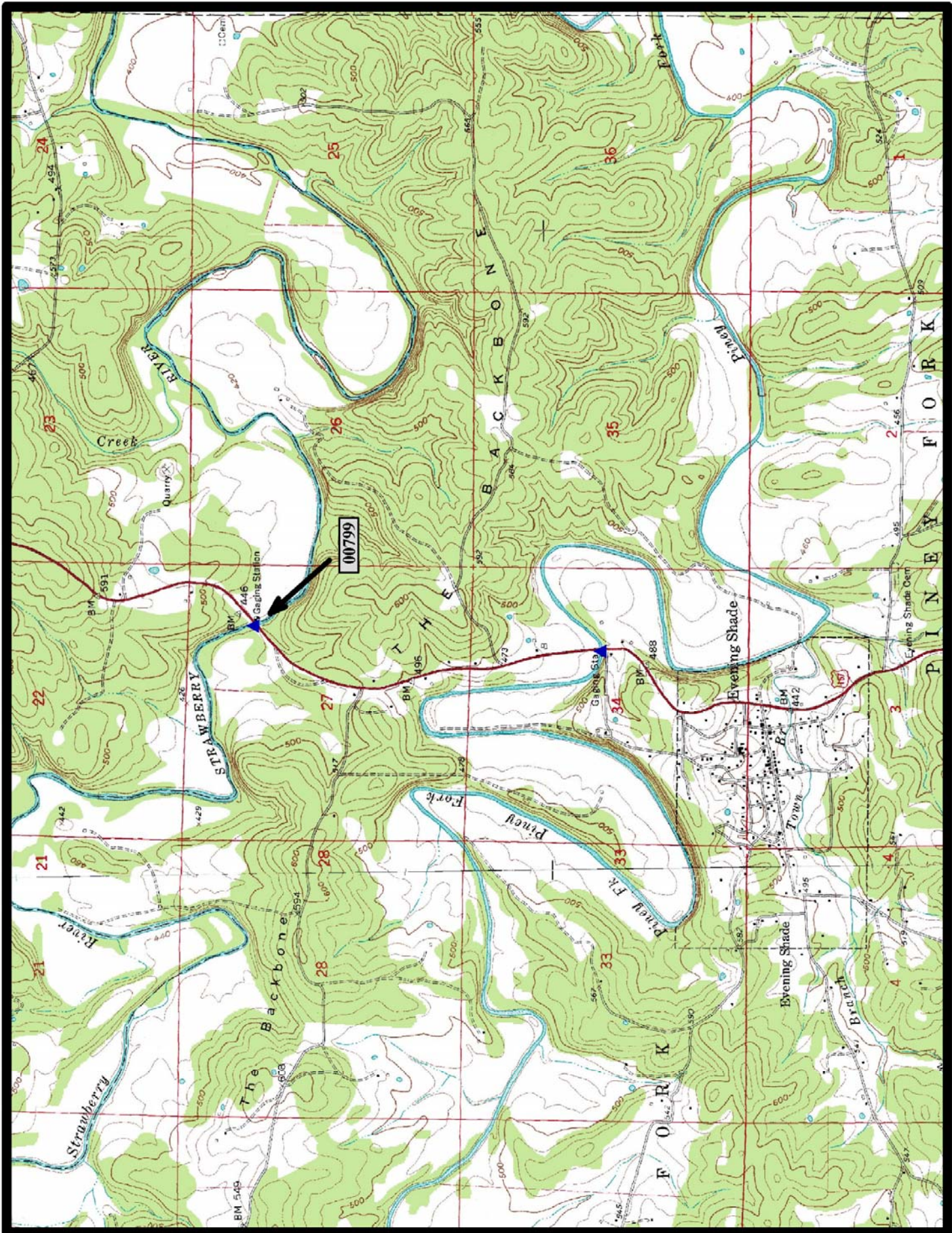


↑
North

Evening Shade 7.5 min. Quad



HISTORIC BRIDGE #00799
US HIGHWAY 167
SHARP COUNTY
CONCRETE ARCH, DECK - OPEN SPANDREL
CROSSES - STRAWBERRY RIVER
DATE OF CONSTRUCTION – 1928
DATE OF ALTERATION - 1955
BUILDER - FRED LUTTJOHANN, TOPEKA, KS
HISTORIC BRIDGE INVENTORY DATE - 2005
SHPO NUMBER – SH0198
HAER NUMBER -
DATE LISTED ON NATIONAL REGISTER -
LAT./LONG. 36:05:56.12, -91:36:31.72

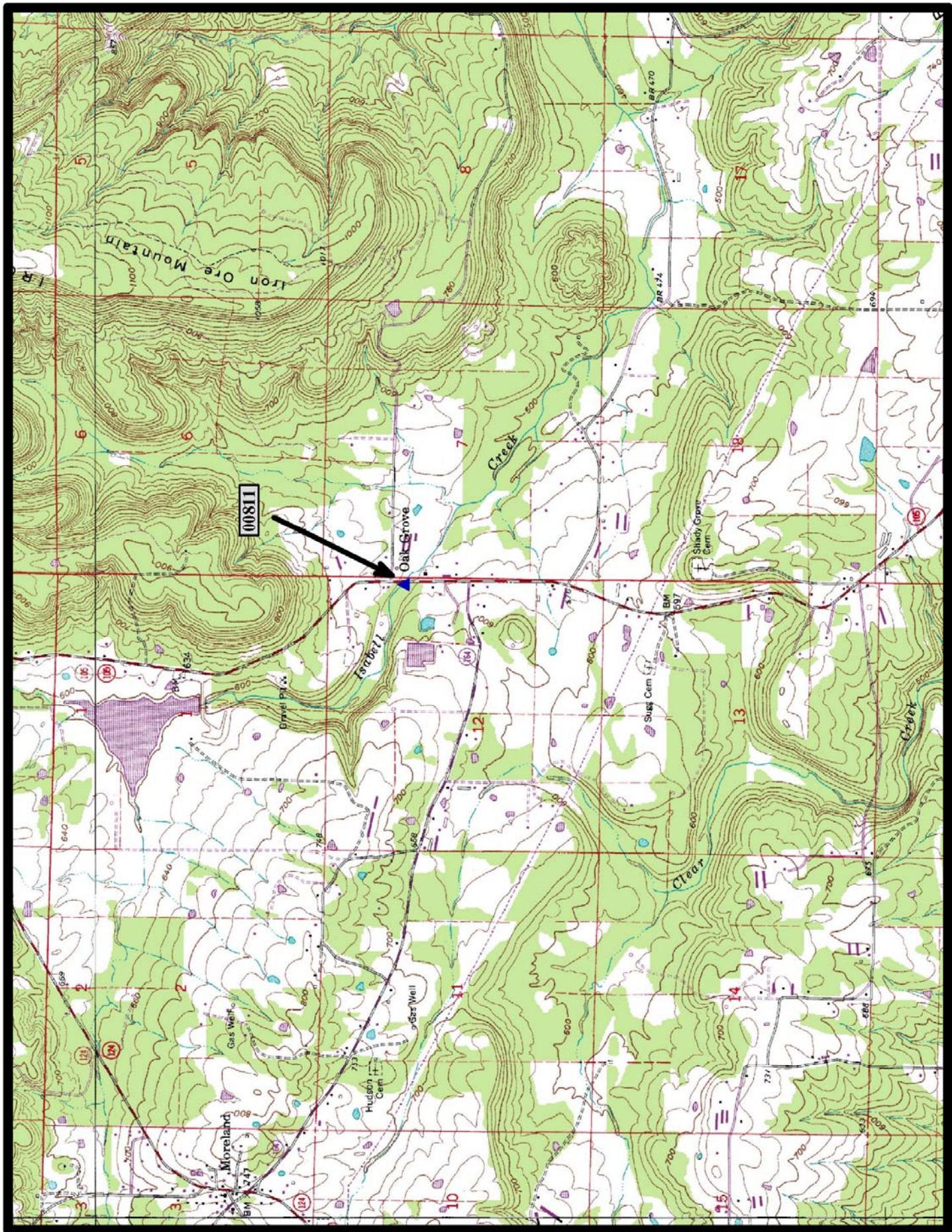


↑
North

Evening Shade 7.5 min. Quad



HISTORIC BRIDGE #00811
STATE HIGHWAY 105
POPE COUNTY
CONCRETE ARCH, DECK - OPEN SPANDREL
CROSSES - ISABELL CREEK
DATE OF CONSTRUCTION - 1928
BUILDER - MAXWELL CONSTRUCTION COMPANY, COLUMBUS, KS
HISTORIC BRIDGE INVENTORY DATE - 2005
SHPO NUMBER - PP0280
HAER NUMBER - AR-58
DATE LISTED ON NATIONAL REGISTER -
LAT./LONG. 35:21:31.46, -92:57:32.88

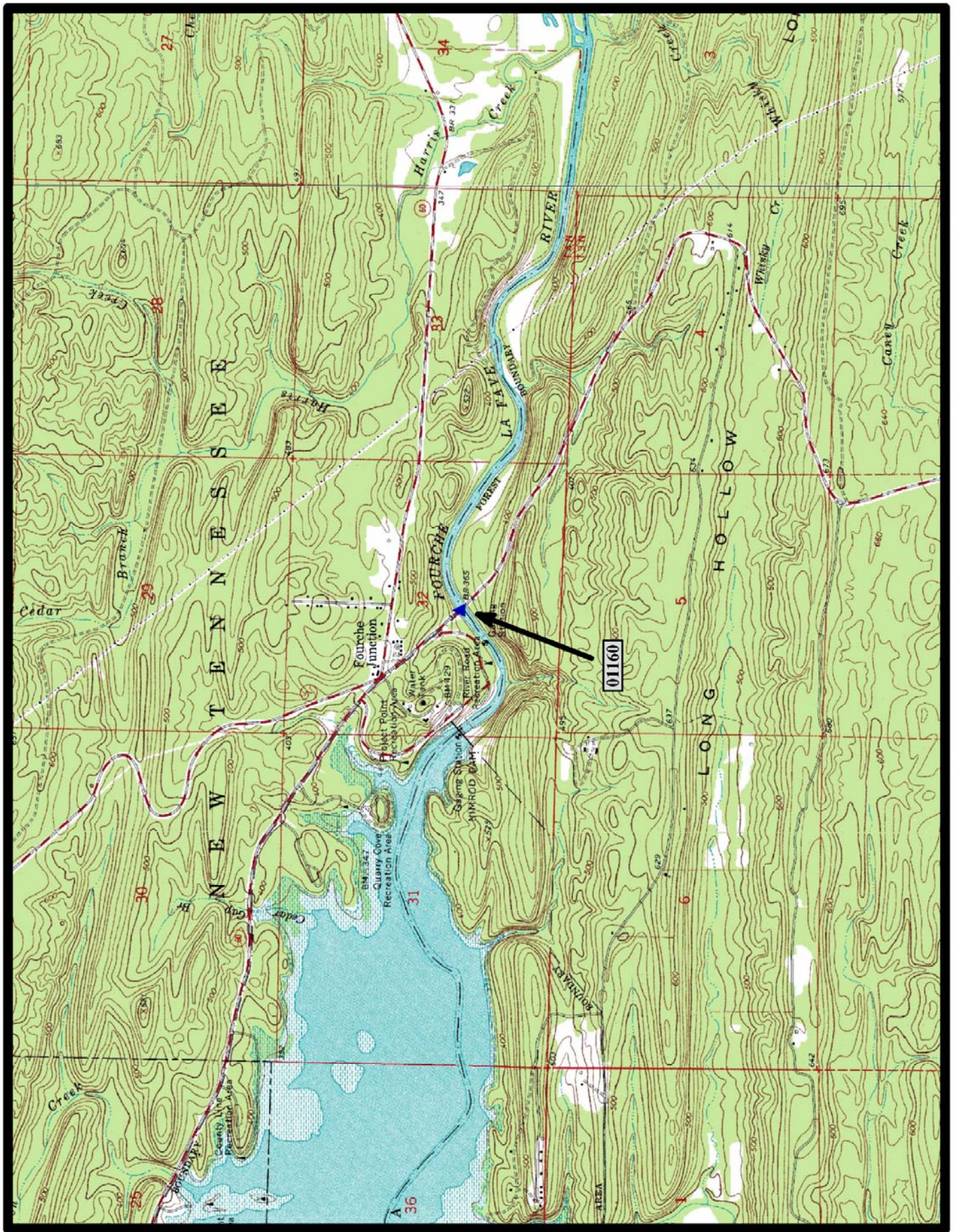


North

Moreland 7.5 min. Quad



HISTORIC BRIDGE #01160
STATE HIGHWAY 7
PERRY COUNTY
CONCRETE ARCH, DECK - OPEN SPANDREL
CROSSES - FOURCHE LAFAYE RIVER
DATE OF CONSTRUCTION - 1941
BUILDER - LUTEN BRIDGE COMPANY, LITTLE ROCK, AR
HISTORIC BRIDGE INVENTORY DATE - 1995
SHPO NUMBER - PE0064
HAER NUMBER - AR-67
DATE LISTED ON NATIONAL REGISTER - 5/26/1995
LAT./LONG. 34:57:06.88, -93:09:08.50

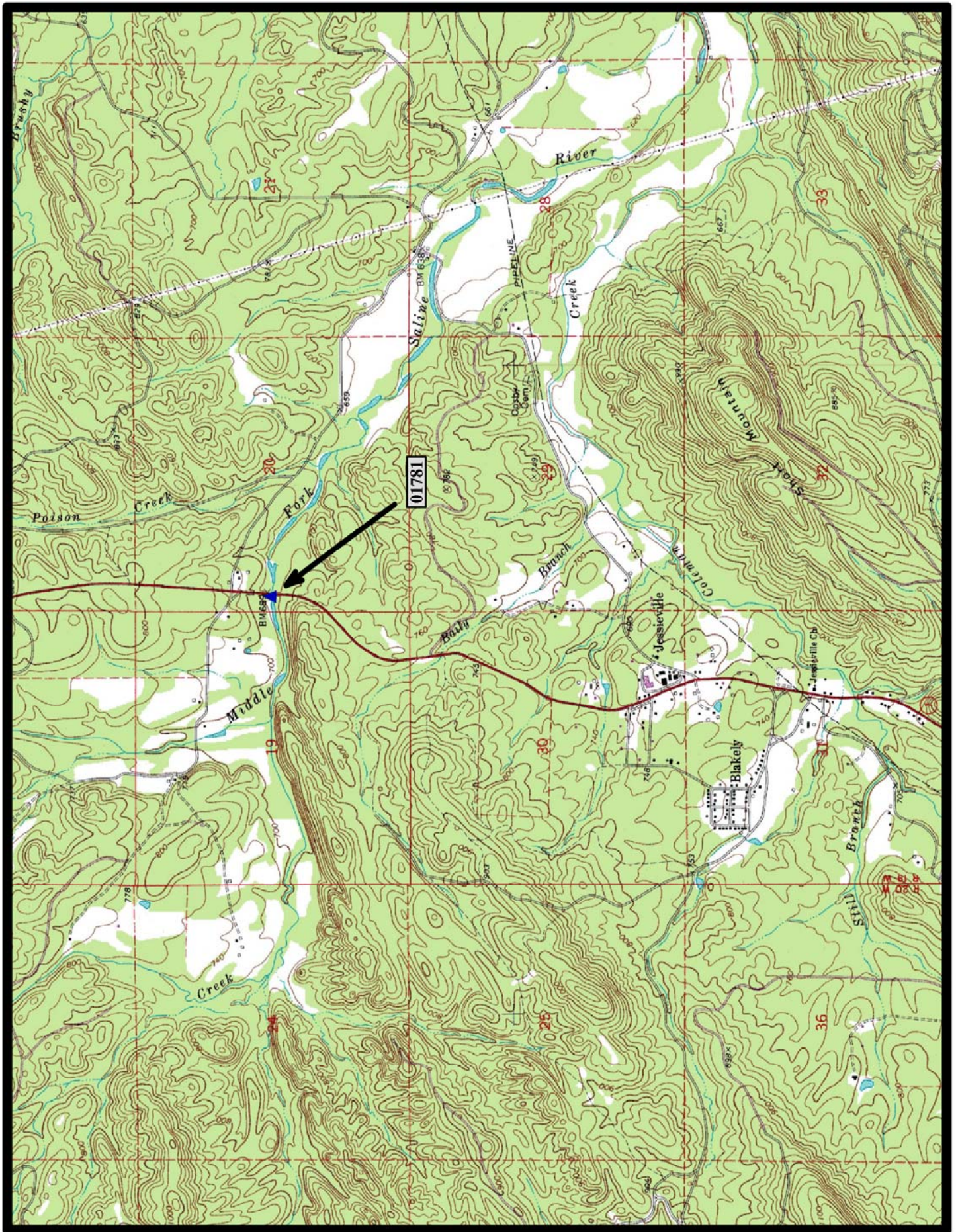


↑
North

Nimrod Dam 7.5 min. Quad



HISTORIC BRIDGE #01781
STATE HIGHWAY 7
GARLAND COUNTY
CONCRETE ARCH, DECK - OPEN SPANDREL
CROSSES - MIDDLE FORK SALINE RIVER
DATE OF CONSTRUCTION - 1933
BUILDER - AULT - RICH CONSTRUCTION, CASSVILLE, MO
HISTORIC BRIDGE INVENTORY DATE - 2005
SHPO NUMBER - GA0241
HAER NUMBER -
DATE LISTED ON NATIONAL REGISTER -
LAT./LONG. 34:43:46.33, -93:03:23.56



←
North

Jesseville 7.5 min. Quad